

How can we join in?

On your marks ...

Grab your fobs and cards

Your school has supplied your child with:

- A fob (primary-aged children) or
- A card (nursery-aged children or children of any age who attend additional special needs schools)

so that they can play the game. You can play too, and win points towards the school total, with the card enclosed in this envelope.

Your card and your child's fob/card **are not connected**, and so you will need to swipe them individually to collect those all-important points.



Beat the Street card



Beat the Street fob

Get set ...

Register for prizes and more

In order to be eligible to:

- Win prizes
 - Track your scores
 - Join your child's school and help it travel up the leaderboard
 - And join in our health survey to earn extra points
- you MUST register both your child's fob or card AND your card on the Beat the Street website: beatthestreet.me/derby**

What can we win?

There are hundreds of pounds worth of prizes, including vouchers and cuddly toys up for grabs, and everyone – teams, schools and individuals – is in with a chance of winning.

Go!

Find your local Beat Box

Get out and explore your local area, finding Beat Boxes using the online or paper map. Hover your card or fob next to the Beat Box until it beeps and flashes.

Walk, run, cycle, scoot or roll to your next Beat Box and hover the card or fob again until it beeps and flashes – you have now scored 10 points.

Visit at least two in an hour

You must visit **at least two Beat Boxes within an hour** to earn 10 points – the more boxes you visit, the more points you earn.

Keep going!

Play on the school run, the walk to work, around town, at weekends, or any time you like! You can walk, run, cycle, scoot or roll between the Beat Boxes.

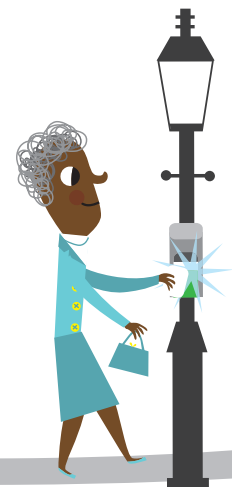
Anyone can join in. You can get more cards for the rest of your family by visiting one of our local distribution points. Find out where these are located on our website:

beatthestreet.me/derby/faqs

Remember, make sure you walk, run, cycle, scoot or roll between Beat Boxes. Driving or travelling in a car is against the rules and could result in your card being removed from the game.

Any questions? Contact our Beat the Street team at team.derby@beatthestreet.me

Have fun!
The Beat the Street Team



Don't forget: be COVID-19 safe!

- Remember – Beat the Street is contactless!
- Be careful not to touch the box when playing
- Keep your distance from other players
- Don't touch cards or fobs belonging to anyone outside your household bubble
- When you get home, wash your hands

